

Doltone House Alterations & Refurbishment

31 Webster St, Milperra NSW 2214

Landscape Development Application

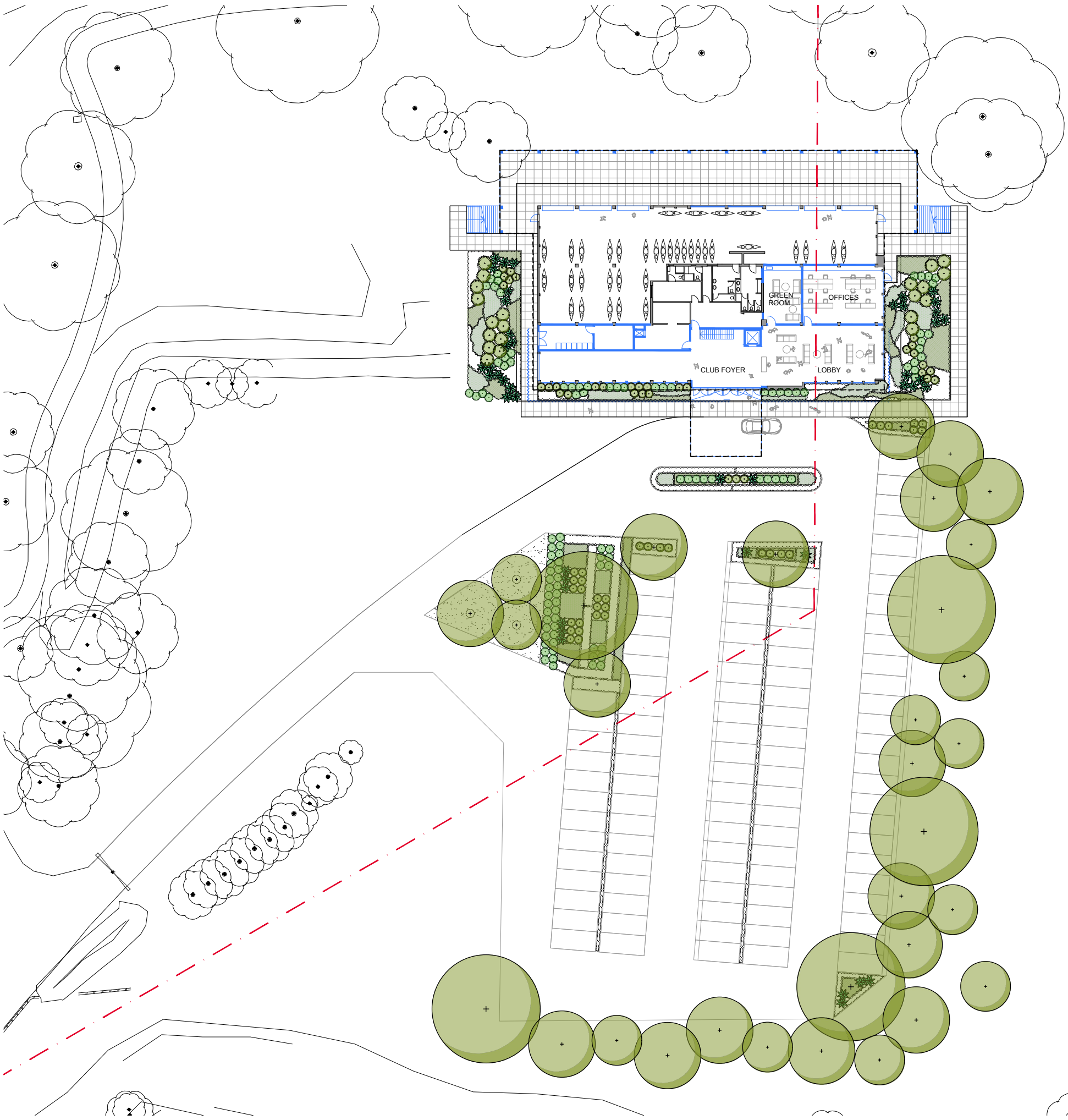
© 2021 Site Image (NSW) Pty Ltd ABN 44 801 262 380 as agent for Site Image NSW Partnership. All rights reserved. This drawing is copyright and shall not be reproduced or copied in any form or by any means (graphic, electronic or mechanical including photocopy) without the written permission of Site Image (NSW) Pty Ltd. Any license, expressed or implied, to use this document for any purpose what so ever is restricted to the terms of the written agreement between Site Image (NSW) Pty Ltd and the instructing party.

The contractor shall check and verify all work on site (including work by others) before commencing the landscape installation. Any discrepancies are to be reported to the Project Manager or Landscape Architect prior to commencing work. Do not scale this drawing. Any required dimensions not shown shall be referred to the Landscape Architect for confirmation.

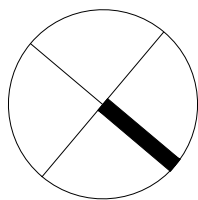
DRAWING SCHEDULE

Dwg No.	Drawing Title	Scale
000	Landscape Coversheet	N/A
100	Landscape Site Plan	1:250 @ A1
101	Landscape Plan - Sheet 01	1:50 @ A1
102	Landscape Plan - Sheet 02	1:50 @ A1
500	Plant Schedule	N/A
501	Landscape Details	As Shown @ A1

D	DA Submission	LH	NM	08.08.2024
C	Architectural Coordination	LH	NM	25.07.2024
B	Architectural Coordination	LH	NM	28.06.2024
A	Draft Issue	LH	NM	06.06.2024
Issue	Revision Description	Drawn	Check	Date



Site Plan | 1:250 @ A1



Client
Doltone House

Project
Doltone House Alterations & Refurbishment
31 Webster Street, Milperra
NSW 2214

Level 1, 3-5 Baptist Street
Redfern NSW 2016
Australia

Tel: (61 2) 8332 5600
Fax: (61 2) 9698 2877
www.siteimage.com.au

Site Image (NSW) Pty Ltd
ABN 44 801 262 380

S I T E I M A G E



Landscape Architects

DEVELOPMENT APPLICATION

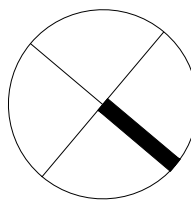
Drawing Name
Landscape Coversheet

Scale	n/a	Drawing Number	000	Issue	D
Job Number	SS24-5358				

NOT FOR CONSTRUCTION

The contractor shall check and verify all work on site (including work by others) before commencing the landscape installation. Any discrepancies are to be reported to the Project Manager or Landscape Architect prior to commencing work. Do not scale this drawing. Any required dimensions not shown shall be referred to the Landscape Architect for confirmation.

D	DA Submission	LH	NM	08.08.2024
C	Architectural Coordination	LH	NM	25.07.2024
B	Architectural Coordination	LH	NM	28.06.2024
A	Draft Issue	LH	NM	06.06.2024
Issue	Revision Description	Drawn	Check	Date



Client
Doltone House

Project
Doltone House Alterations & Refurbishment
31 Webster Street, Milperra
NSW 2214

Level 1, 3-5 Baptist Street
Redfern NSW 2016
Australia

Tel: (61 2) 8332 5600
Fax: (61 2) 9698 2877
www.siteimage.com.au

Site Image (NSW) Pty Ltd
ABN 44 801 262 380

S I T E I M A G E



Landscape Architects

DEVELOPMENT APPLICATION

Drawing Name
Landscape Site Plan

Scale 1:250 @ A1

Job Number
SS24-5358

0 1 2 4 6 10m

Drawing Number
100

Issue
D

NOT FOR CONSTRUCTION



Indicative Plant Schedule						
	Botanic Name	Common Name	Mature Size	Pot Size	Density	Qty
CARPARK PLANTING						
TREES						
Em	<i>Eucalyptus moluccana</i>	Grey Box	20 x 8	200L	As Shown	5
Md	<i>Melaleuca decora</i>	White Feather Honeymyrtle	12 x 5	200L	As Shown	16
Ms	<i>Melaleuca styphelioides</i>	Prickly-leaved Paperbark	10 x 4	200L	As Shown	11
SHRUBS & ACCENTS						
Bm	<i>Backhousia myrtifolia</i>	Grey Myrtle	3 x 2	300mm	As Shown	18
Ka	<i>Kunzea ambigua</i>	Tick Bush	1.5 x 1.5	300mm	As Shown	30
PMM	<i>Pittosporum</i> 'Miss Muffet'	Sweet Pittosporum	1 x 1.5	300mm	As Shown	43
PBB	<i>Phormium</i> 'Bronze Baby'	NZ Flax	1 x 1	300mm	As Shown	17
GRASSES & GROUND COVERS						
Dr	<i>Dichondra repens</i>	Kidneyweed	0.15 x spreading	150mm	5/m ²	52
Fg	<i>Festuca glauca</i>	Blue Fescue	0.5 x 0.5	150mm	5/m ²	185
Lm	<i>Liriope muscari</i>	Turf Lily	0.5 x 0.5	150mm	5/m ²	120
Ta	<i>Themeda australis</i>	Kangaroo Grass	1 x 0.5	150mm	5/m ²	37
BUILDING/ENTRY PLANTING						
SHRUBS & ACCENTS						
Aa	<i>Agave attenuata</i>	Foxtail Agave	1.5 x 1.5	300mm	As Shown	13
AiR	<i>Alcantarea imperialis</i> 'Rubra'	Imperial Bromeliad	2 x 2	300mm	As Shown	17
CLJ	<i>Callistemon</i> 'Little John'	Bottlebrush	0.5 x 0.5	300mm	As Shown	47
Gs	<i>Grevillea sericea</i>	Pink Spider Flower	2 x 2	300mm	As Shown	21
WM	<i>Westringia fruticosa</i> 'Mundi'	Coastal Rosemary	0.5 x 0.5	300mm	As Shown	30
GRASSES & GROUND COVERS						
Dm	<i>Dichelachne micrantha</i>	Longhair Plume Grass	0.8 x 0.5	150mm	5/m ²	37
Dre	<i>Dianella revoluta</i>	Blue-Flax Lily	0.5 x 0.4	150mm	5/m ²	70
LT	<i>Lomandra</i> 'Tanika'	Mat Rush	0.6 x 0.6	150mm	5/m ²	66
Ss	<i>Senecio serpens</i>	Blue Chalksticks	0.3 x 0.5	150mm	5/m ²	46



Eucalyptus moluccana
Grey Box



Melaleuca decora
White Feather Honey Myrtle



Melaleuca styphelioides
Prickly-leaved Paperbark



Callistemon 'Little John'
Bottlebrush



Grevillea sericea
Pink Spider Flower



Westringia fruticosa 'Mundi'
Coastal Rosemary



Agave attenuata
Foxtail Agave



Alcantarea imperialis 'Rubra'
Imperial Bromeliad



Senecio serpens
Blue Chalksticks



Dichelachne micrantha
Longhair Plume Grass



Dianella revoluta
Blue-Flax Lily



Lomandra 'Tanika'
Mat Rush

© 2021 Site Image (NSW) Pty Ltd. ABN 44 801 262 380 as agent for Site Image NSW Partnership. All rights reserved. This drawing is copyright and shall not be reproduced or copied in any form or by any means (graphic, electronic or mechanical including photocopy) without the written permission of Site Image (NSW) Pty Ltd. Any license, expressed or implied, to use this document for any purpose what so ever is restricted to the terms of the written agreement between Site Image (NSW) Pty Ltd and the instructing party.

The contractor shall check and verify all work on site (including work by others) before commencing the landscape installation. Any discrepancies are to be reported to the Project Manager or Landscape Architect prior to commencing work. Do not scale this drawing. Any required dimensions not shown shall be referred to the Landscape Architect for confirmation.

C	DA Submission	LH	NM	08.08.2024
B	Architectural Coordination	LH	NM	25.07.2024
A	Draft Issue	LH	NM	06.06.2024
Issue	Revision Description	Drawn	Check	Date

Client
Doltone House

Project
Doltone House Alterations & Refurbishment
31 Webster Street, Milperra
NSW 2214

Level 1, 3-5 Baptist Street
Redfern NSW 2016
Australia

Tel: (61 2) 8332 5600
Fax: (61 2) 9698 2877
www.siteimage.com.au

Site Image (NSW) Pty Ltd
ABN 44 801 262 380

S I T E I M A G E

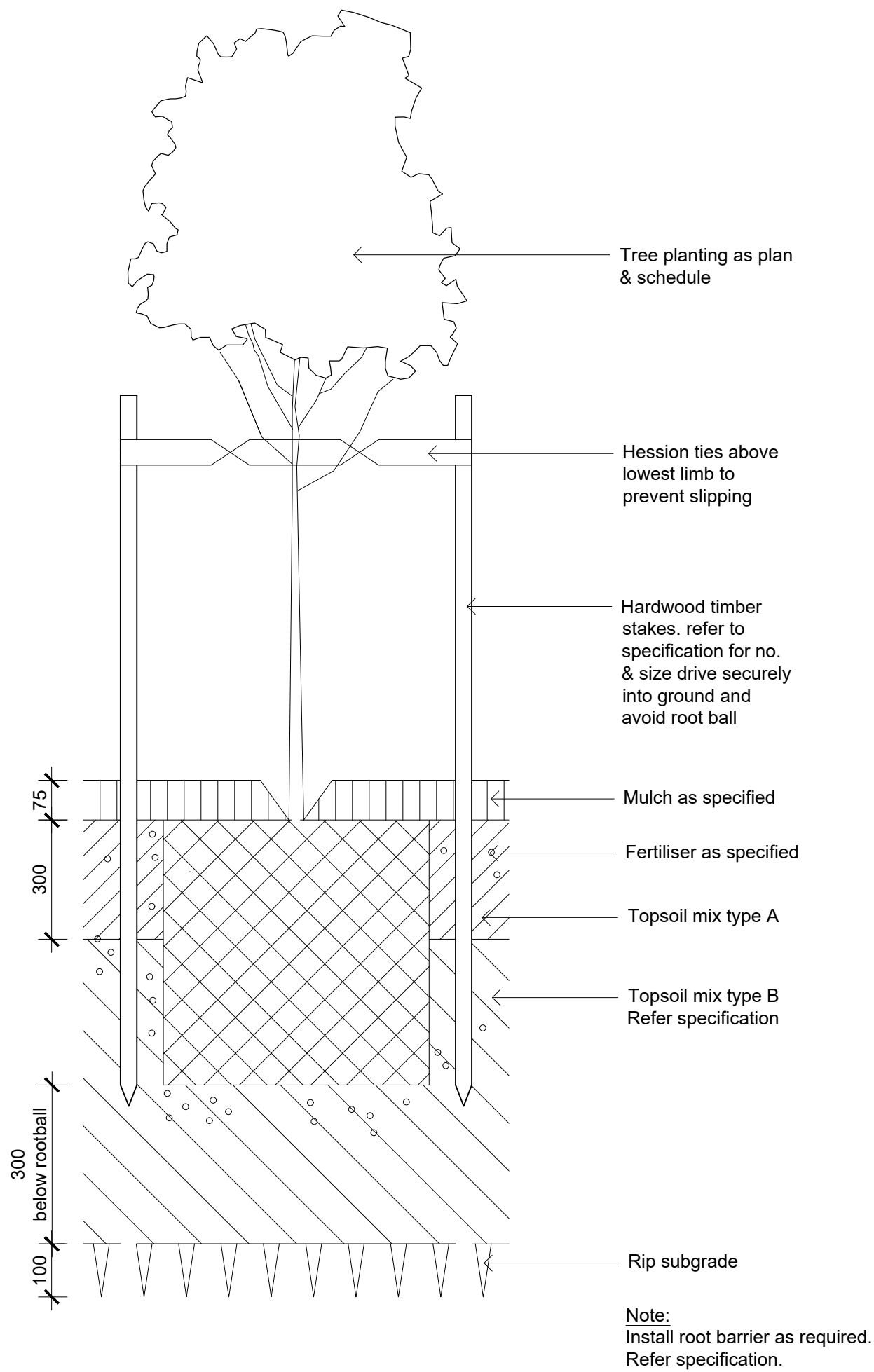


DEVELOPMENT APPLICATION

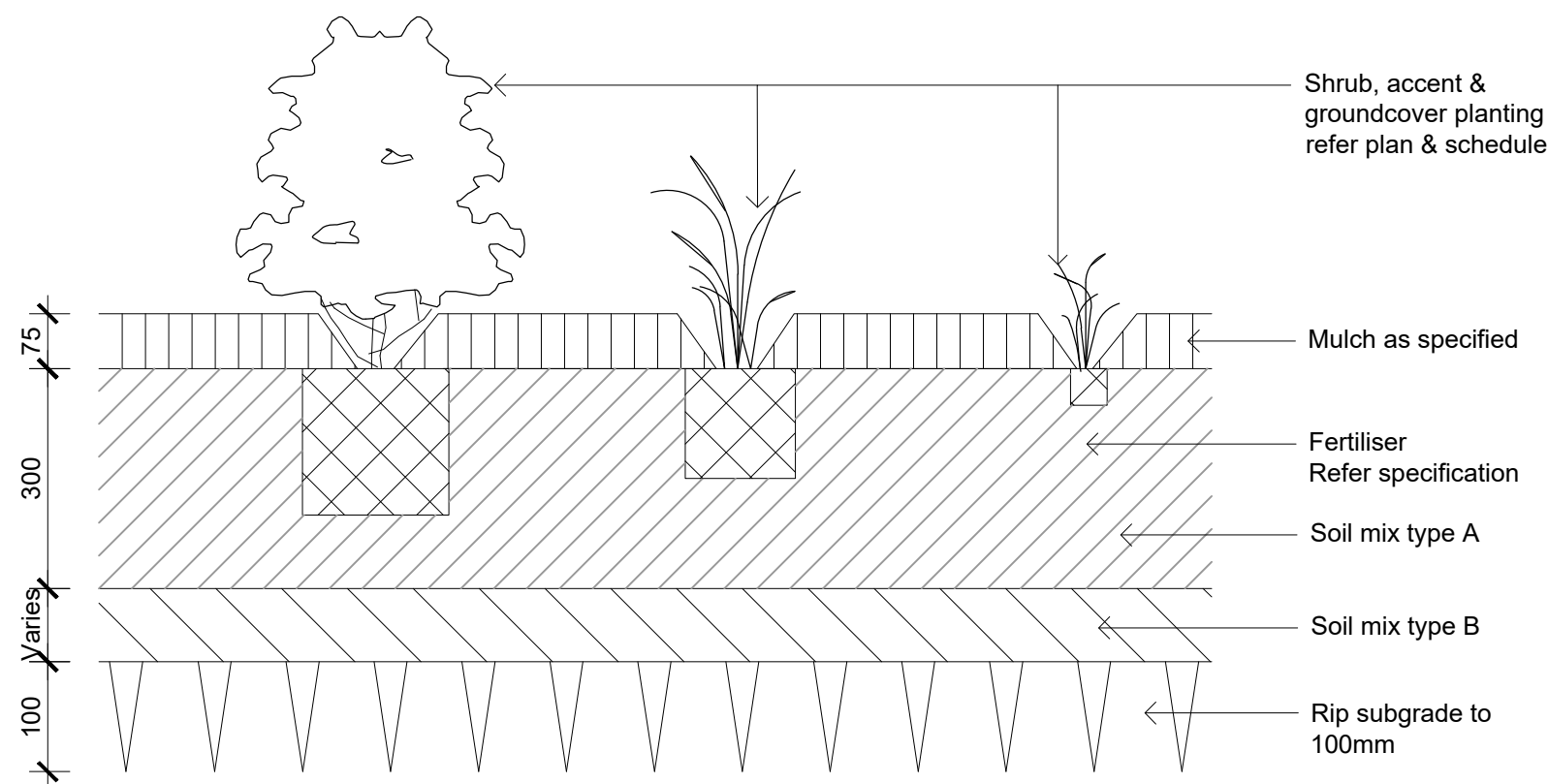
Drawing Name
Plant Schedule

Scale	n/a	Drawing Number	Issue
Job Number	SS24-5358	500	C

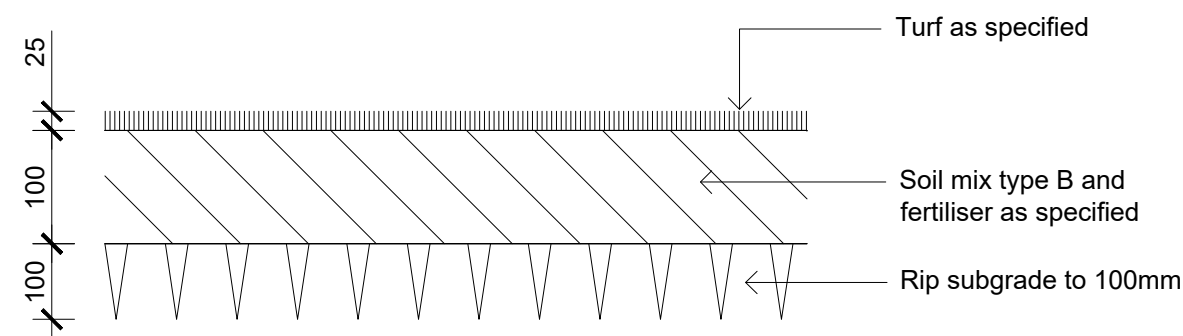
NOT FOR CONSTRUCTION



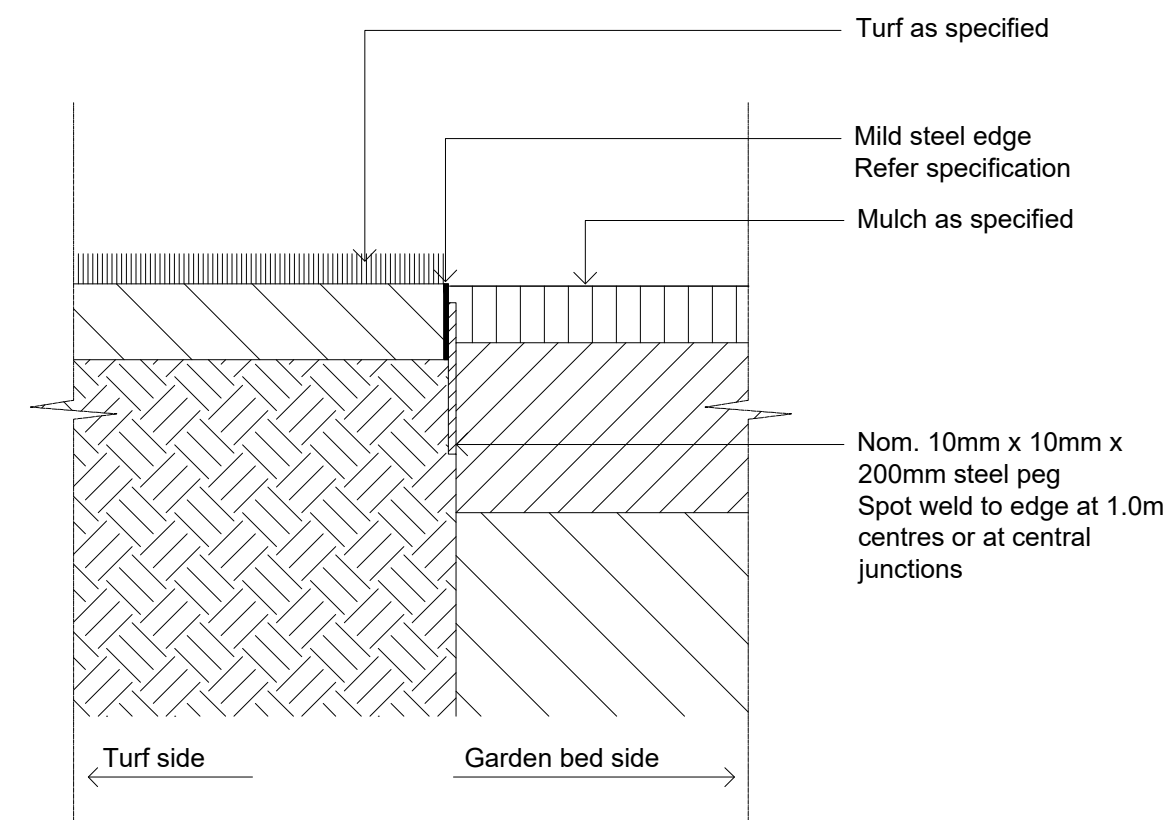
Detail 75-200L Tree Planting on Grade
1:10



Detail Shrub Accent & Groundcover Planting on Grade
1:10



Detail Turf on Even Grade
1:10



Typical Mild Steel Edge
1:10

© 2021 Site Image (NSW) Pty Ltd ABN 44 801 262 380 as agent for Site Image NSW Partnership. All rights reserved. This drawing is copyright and shall not be reproduced or copied in any form or by any means (graphic, electronic or mechanical including photocopy) without the written permission of Site Image (NSW) Pty Ltd. Any license, expressed or implied, to use this document for any purpose what so ever is restricted to the terms of the written agreement between Site Image (NSW) Pty Ltd and the instructing party.

The contractor shall check and verify all work on site (including work by others) before commencing the landscape installation. Any discrepancies are to be reported to the Project Manager or Landscape Architect prior to commencing work. Do not scale this drawing. Any required dimensions not shown shall be referred to the Landscape Architect for confirmation.

C	DA Submission	LH	NM	08.08.2024
B	Architectural Coordination	LH	NM	25.07.2024
A	Draft Issue	LH	NM	06.06.2024
Issue	Revision Description	Drawn	Check	Date

Client
Doltone House

Project
Doltone House Alterations & Refurbishment
31 Webster Street, Milperra
NSW 2214

Level 1, 3-5 Baptist Street
Redfern NSW 2016
Australia

Tel: (61 2) 8332 5600
Fax: (61 2) 9698 2877
www.siteimage.com.au

Site Image (NSW) Pty Ltd
ABN 44 801 262 380

S I T E I M A G E



DEVELOPMENT APPLICATION

Drawing Name
Landscape Details

Scale: **as shown @ A1**

Job Number
SS24-5358

Drawing Number
501

Issue
C

NOT FOR CONSTRUCTION